



Select Series Architectural Strip Light

Product Specifications



TCP's Select Series Architectural Strip Light combines elegant lighting design with field customization to perfectly illuminate any space. These architectural strips will draw people into the space and create an atmosphere where they want to spend time.

Hang each light individually or connect them end-to-end. 90° and straight linking options allow for limitless creative configurations.

Reasons to choose the Select Series Architectural Strip Lights from TCP

- Selectable uplight eliminates cave effect
- 50,000 hour rated life minimizes replacements and labor costs
- Connect in any straight, 90 degree, or cross section configuration
- 0-10V dimming driver comes standard for smooth, continuous dimming
- Fast coupler link for easy, time-saving installation
- Enhance the atmosphere in any space

Ideal Applications

- Lobbies
- Meeting Rooms
- Banquet Halls
- Waiting Areas
- Offices
- Restaurants
- Galleries



LED Architectural Strip Light

Specifications

Wattage.....	40W/45W/50W
Total Lumens.....	5800/5200/4600L
Color Temperature (CCT).....	3500K/4100K/5000K
Dimming.....	0-10V (standard)
Input Line Voltage.....	120-277V
Rated Life.....	>50,000 hours
CRI.....	>83
Power Factor.....	>.95

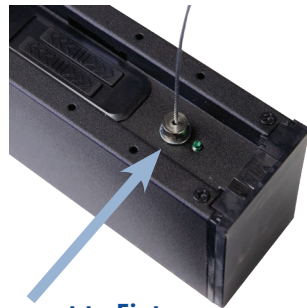
Warranty

Five year limited warranty against defects in manufacturing

Connector Options



Architectural Strip Light Hanging Kit (3FT Cable)



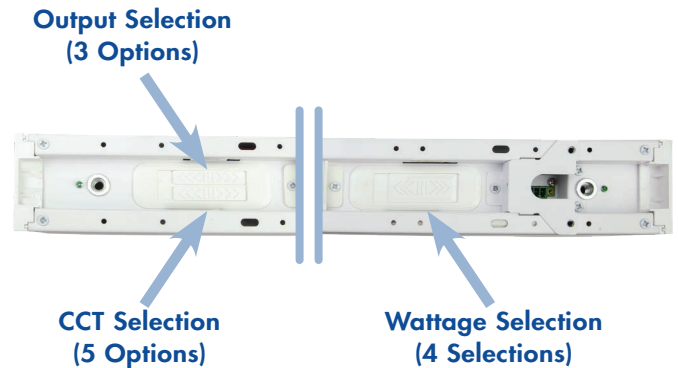
Connect to Fixture

Connect to Ceiling

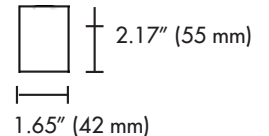
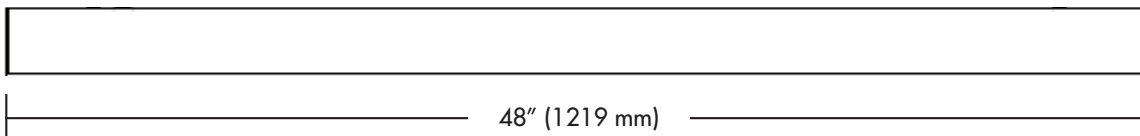


Control Switches

There are three switches on the top of the fixture.



Dimensions





LED Architectural Strip Light

Applications

TCP's Select Series Architectural Strip Lights deliver beautifully designed light that transforms the space it occupies. They feature a long 50,000 hour life, low maintenance, and are perfect for office spaces, waiting areas, and banquet halls.

Construction

- Visually appealing slim, low-profile design
- Heavy-duty aluminum housing
- Durable black powder coat finish
- 3 FT Suspended mount kit included in the box
- Straight connector included in the box for linear end to end connection

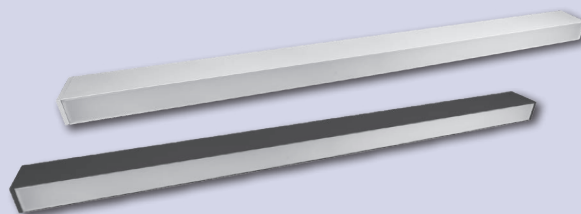
Electrical

- Universal 120-277V
- 0-10V dimming (standard)
- Long 50,000 hour rated life
- cULus damp location rated

Optics

- Durable ribbed, frosted white diffuser lens
- Glare-free light distribution

Item Number	
Notes	Type



Listings

cULus Listed – damp location rated
RoHS Compliant
DLC 5.1 Listed

Warranty

Five year limited warranty against defects in manufacturing

Installation

Suspended, surface mount, and flush mount

Before installation, please consult your local ordinances and building codes for compliance

Catalog Ordering Matrix

FAMILY	LENGTH	VOLTAGE	CONTROLS	DOWN LUMEN PACKAGE (POWER) ^{1,2}	COLOR TEMPERATURE	OPTIONS	FRAME OPTIONS	SENSOR OPTIONS
SARC - Selectable Architectural Strip	4 - 4 ft.	U - 120-277V	ZD - 0-10V Dimming	SW2 - 40/32/26/20W (4600/3600/2800/2200l)	CCT - Selectable CCT 3500/4100/5000K	EB - Battery Backup	Blank - Black WH - White	IS - Integrated Microwave Sensor NLS - Network Lighting PIR Sensor

¹ Approximate lumen output. Actual performance may vary based on CCT, options selected and end user application

² Actual wattage may differ by +/- 10%

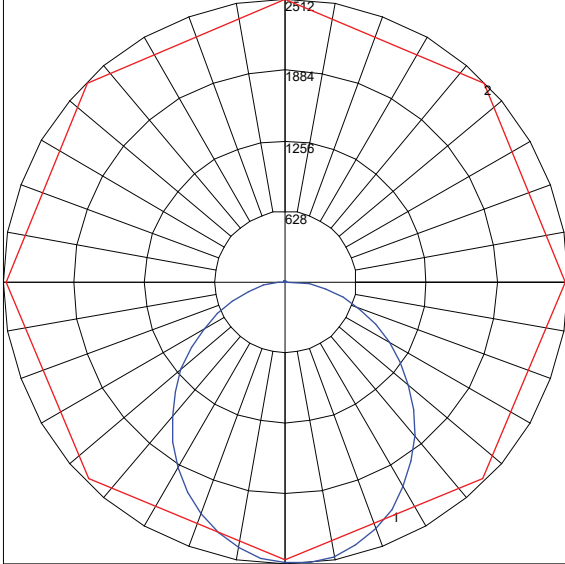


LED Architectural Strip Light

Photometric Report

Based on TCP Item # SARC4UZDSW6CCT
set at 50 Watts and 3500K - DOWNLIGHT ONLY

Polar Graph



Maximum Candela = 2512.1 Located At Horizontal Angle = 90, Vertical Angle = 5
1 - Vertical Plane Through Horizontal Angles (90-270) (Through Max. Cd.)
2 - Horizontal Cone Through Vertical Angle (5) (Through Max. Cd.)

Characteristics

Luminaire Lumens	6634
Total Luminaire Efficiency	100 %
Luminaire Efficacy Rating (LER)	131
Total Luminaire Watts	50.7531
Ballast Factor	1.00
CIE Type	Direct
Spacing Criterion (0-180)	1.22
Spacing Criterion (90-270)	1.26
Spacing Criterion (Diagonal)	1.32
Basic Luminous Shape	Rectangular

Coefficients of Utilization – Zonal Cavity Method

Effective Floor Cavity Reflectance 0.20

RC	80				70				50				30				10				0
	70	50	30	10	70	50	30	10	50	30	10	50	30	10	50	30	10	50	30	10	0
0	119	119	119	119	116	116	116	116	111	111	111	106	106	106	102	102	102	100	100	100	100
1	109	104	100	96	106	102	98	94	97	94	91	93	91	88	90	88	86	84	84	84	84
2	99	91	84	78	96	89	83	77	85	80	75	82	78	74	79	75	72	70	70	70	70
3	90	80	72	65	88	78	71	65	75	69	63	72	67	62	70	65	61	59	59	59	59
4	83	71	62	55	80	70	61	55	67	60	54	65	59	54	62	57	53	51	51	51	51
5	76	63	54	48	74	62	54	48	60	53	47	58	52	47	56	51	46	44	44	44	44
6	70	57	48	42	69	56	48	42	54	47	41	53	46	41	51	45	41	39	39	39	39
7	65	52	43	37	64	51	43	37	50	42	37	48	41	36	47	41	36	34	34	34	34
8	61	47	39	33	59	47	39	33	45	38	33	44	37	33	43	37	32	31	31	31	31
9	57	44	35	30	56	43	35	30	42	35	30	41	34	29	40	34	29	28	28	28	28
10	53	40	32	27	52	40	32	27	39	32	27	38	31	27	37	31	27	25	25	25	25

Zonal Lumen Summary

Zone	Lumens	%Lamp	%Fixt
0-20	905.96	13.70	13.70
0-30	1899.66	28.60	28.60
0-40	3064.72	46.20	46.20
0-60	5265.61	79.40	79.40
0-80	6482.41	97.70	97.70
0-90	6620.85	99.80	99.80
10-90	6384.53	96.20	96.20
20-40	2158.76	32.50	32.50
20-50	3330.71	50.20	50.20
40-70	2970.46	44.80	44.80
60-80	1216.79	18.30	18.30
70-80	447.23	6.70	6.70
80-90	138.45	2.10	2.10
90-110	6.82	0.10	0.10
90-120	8.26	0.10	0.10
90-130	9.16	0.10	0.10
90-150	11.02	0.20	0.20
90-180	12.67	0.20	0.20
110-180	5.85	0.10	0.10
180	6633.52	100.00	100.00

Total Luminaire Efficiency = 100.00%

Reflectances

		Ceiling Cavity					Walls					Floor Cavity				
		70	70	50	50	30	70	70	50	50	30	20	20	20	20	20
Room Size	UGR	Viewed Crosswise					Viewed Endwise									
X=2H Y=2H	2H	21.3	22.9	21.6	23.2	23.5	21.8	23.5	22.2	23.8	24.1	21.3	22.9	21.6	23.2	23.5
	3H	23.0	24.4	23.3	24.8	25.1	23.8	25.3	24.2	25.6	25.9	23.0	24.4	23.3	24.8	25.1
	4H	23.6	25.0	24.0	25.3	25.7	24.6	26.0	25.0	26.3	26.7	23.6	25.0	24.0	25.3	25.7
	6H	24.0	25.3	24.4	25.7	26.1	25.3	26.6	25.7	27.0	27.3	24.0	25.3	24.4	25.7	26.1
	8H	24.2	25.4	24.6	25.8	26.2	25.6	26.8	26.0	27.2	27.6	24.2	25.4	24.6	25.8	26.2
4H	12H	24.3	25.4	24.7	25.8	26.2	25.9	27.1	26.3	27.4	27.9	24.3	25.4	24.7	25.8	26.2
	2H	21.9	23.2	22.3	23.6	24.0	22.5	23.9	22.9	24.2	24.6	21.9	23.2	22.3	23.6	24.0
	3H	23.8	25.0	24.2	25.4	25.8	24.6	25.8	25.1	26.2	26.6	23.8	25.0	24.2	25.4	25.8
	4H	24.6	25.6	25.0	26.0	26.5	25.6	26.7	26.0	27.1	27.5	24.6	25.6	25.0	26.0	26.5
	6H	25.1	26.1	25.6	26.5	27.0	26.5	27.4	26.9	27.8	28.3	25.1	26.1	25.6	26.5	27.0
8H	8H	25.3	26.2	25.8	26.6	27.1	26.9	27.7	27.3	28.1	28.6	25.3	26.2	25.8	26.6	27.1
	12H	25.5	26.2	25.9	26.7	27.2	27.2	28.0	27.7	28.4	28.9	25.5	26.2	25.9	26.7	27.2
	4H	24.9	25.8	25.4	26.2	26.7	26.0	26.8	26.4	27.3	27.7	24.9	25.8	25.4	26.2	26.7
	6H	25.6	26.3	26.1	26.8	27.3	27.0	27.7	27.4	28.2	28.6	25.6	26.3	26.1	26.8	27.3
	8H	25.9	26.5	26.4	27.0	27.5	27.4	28.1	28.0	28.6	29.1	25.9	26.5	26.4	27.0	27.5
12H	12H	26.1	26.7	26.6	27.1	27.7	27.9	28.5	28.4	29.0	29.5	26.1	26.7	26.6	27.1	27.7
	4H	25.0	25.7	25.4	26.2	26.7	26.0	26.8	26.5	27.2	27.7	25.0	25.7	25.4	26.2	26.7
	6H	25.7	26.4	26.2	26.8	27.4	27.1	27.7	27.6	28.2	28.7	25.7	26.4	26.2	26.8	27.4
8H	26.0	26.6	26.5	27.1	27.6	27.6	28.2	28.1	28.6	29.2	26.0	26.6	26.5	27.1	27.6	

Maximum UGR = 29.5



5 YEAR WARRANTY

TCP®

325 Campus Dr. | Aurora, Ohio 44202 | P: 800-324-1496 | tcp.com

©TCP DEC 2025/WF558355

TECHNOLOGY CAST IN A BEAUTIFUL LIGHT

For over 30 years, TCP has been designing, developing and delivering energy-efficient lighting into the market. Thanks to our cutting-edge technology and manufacturing expertise, we have shipped billions of high quality lighting products. With TCP, you can count on a lighting product that is designed to meet the needs of the market - that transforms your surroundings and envelopes you in warmth - lighting that generates beauty with every flip of the switch.

Sales:

Date:

Model:

Project:

Rep:

Catalog Number:

Type:

Notes:



For more information on the quality and care TCP can deliver, call us at **800.324.1496** or visit tcp.com

325 Campus Dr. | Aurora, Ohio 44202 | P: 800.324.1496 | F: 877.487.0516