

TECHNOLOGY CAST IN A BEAUTIFUL LIGHT



Q Series Aisle Light Product Specifications

For over 20 years, TCP has been designing, developing and delivering energy-efficient lighting into the market. Thanks to our cutting-edge technology and manufacturing expertise, we have shipped billions of high quality lighting products. With TCP, you can count on a lighting product that is designed to meet the needs of the market - that transforms your surroundings and envelopes you in warmth - lighting that generates beauty with every flip of the switch.

The Q Series Aisle Light by TCP incorporates the special needs of grocery and high-end shopping applications into the fixture design. The 24° angle between light bars provides a 144° beam angle, uplight to reduce “cave effect”, and a delivered light focused on the product display. Incorporating customer values into the design, the aisle light includes a 97+ CRI with balanced R9 values and uniform spectrum to drastically bump up the visual color realization of products on display while customers enjoy their experience with a feeling of sunlight.

Reasons to choose the Q Series Aisle Light from TCP

- TCP Quick Connect system*
- High CRI options available
- Uniform spectrum - removal of blue peak from spectrum content
- Uplight - no cave effect
- V-shape directs light where you need it most - on the product
- 144° light spread



*Scan me with your phone to see the Aisle Light in action!

Ideal Applications

- High-end retail settings
- Architectural applications
- Warehouses
- Grocery stores
- Commercial & Industrial

For more information on the quality and care TCP can deliver, call us at 800.324.1496 or visit tcpi.com

325 Campus Dr. | Aurora, Ohio 44202 | P: 800.324.1496 | F: 877.487.0516

TCP®
325 Campus Dr. | Aurora, Ohio 44202 | P: 800-324-1496 | tcpi.com



5 YEAR
WARRANTY

Not all versions of this product are qualified on the DLC GPL. To view our DLC qualified products, please consult the DLC Qualified Products List at www.designlights.org/gpl.



Q Series Aisle Light



Q Series Aisle Light

Specifications

Input Line Voltage 120-277 VAC
Input Line Frequency.....50/60Hz
Wattage..... 35/45/55/110W
Lumens (80 CRI) 4725/6075/7425/14850L
Lumens (90 CRI, R9>50) 4025/5175/6325/12650L
Lumens per Watt (80 CRI)>135 LPW
Lumens per Watt (90 CRI)>115 LPW
Rated Life.....50,000 hours
Minimum Starting Temperature 20°C (-4°F)
Maximum Operating Temperature.....50°C (122°F)
CRI >80 or >90
Power Factor>0.9
THD.....<20%
Ratings cULus, damp location rated
Controls.....0-10V dimming (standard)

Features

- Lens wrap-around design provides uplight to reduce cave effect
- Lightweight, quick install construction
- Standard frosted lens for glare control
- No shadows - smooth, even lighting
- Damp location rated
- 0-10V smooth, no-flicker dimming
- Operating temperature: -4°F to 122°F
- Long 50,000 hour rated life
- Includes 6’ quick connect 5-wire power cord
- 179° field angle

Item Number

Notes

Type



Listings

cULus Listed
RoHS Compliant
DLC 5.1 Standard

Warranty

Five year limited warranty against defects in manufacturing.

Hardware Included

- 10’ Cable Hanger
- 6’ TCP Quick Connect 5-wire cord

Installation

Hang from a structural support. Before installation, please consult your local ordinances and building codes.

High Wall Wash Applications



Q Aisle Light hung along wall. Eliminates cave effect in the upper corners of the room.

The Q Aisle Light can be used in a wide variety of applications such as retail shopping and grocery. The 144° beam spread eliminates cave effect all the way up to the corners of the room.

Catalog Ordering Matrix

Example: QAL4UZDA29V440K

FAMILY	LENGTH	VOLTAGE	CONTROLS	LUMEN PACKAGE (Power) ^{1,2}	COLOR RENDERING INDEX	LIGHT BAR ANGLE	CCT	COLOR OPTION	FACTORY INSTALLED OPTIONS	FACTORY INSTALLED CONTROLS
QAL – Q Series Aisle Light	4 – 4 foot	U – 120-277V	ZD – 0-10V Dimming	A2 – 4725L (35W) A3 – 6075L (45W) A4 – 7425L (55W)* A8 – 14850L (110W)	Blank – 80+ CRI	V4 – 12°	35K – 3500K 40K – 4000K 50K – 5000K	Blank – White BK – Black ³	Blank – No Add-on B – Battery Backup	Blank – No controls
				A2 – 4025L (35W) A3 – 5175L (45W) A4 – 6325L (55W)* A8 – 12650 (110W)	9 – 90+ CRI, R9>50					

¹ Approximate lumen output. Actual performance may vary based on CCT, options selected and end use application
² Actual wattage may differ by +/- 10%
³ Black and other special colors are a special order. Please contact your TCP representative for lead time
* 55W unit is wattage selectable: 35/45/55W

Field Installed Accessories

- Q5DAISY4FT - Quick connect 5-wire daisy chain cable
- QTLSMOUNT1 - Surface Mount Kit

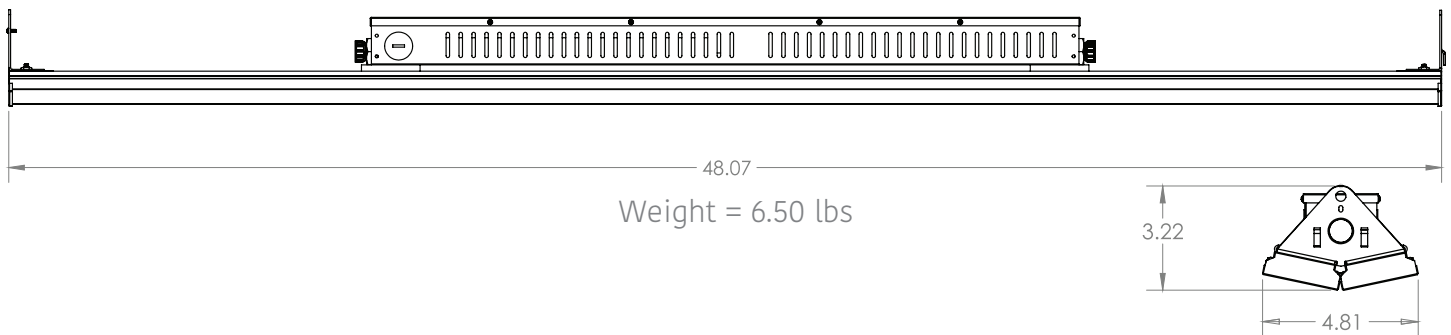


Not all versions of this product are qualified on the DLC GPL. To view our DLC qualified products, please consult the DLC Qualified Products List at www.designlights.org/qpl.



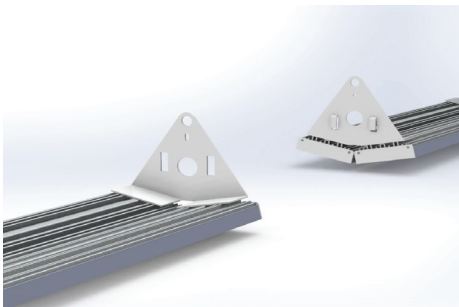
Not all versions of this product are qualified on the DLC GPL. To view our DLC qualified products, please consult the DLC Qualified Products List at www.designlights.org/qpl.

Wireline Dimensions



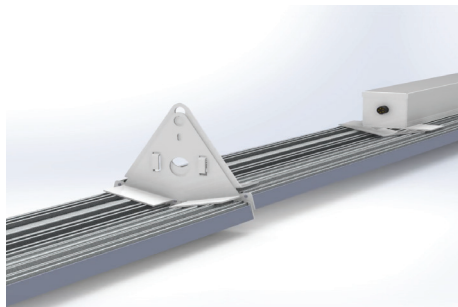
TCP Quick Connect System

Step 1:



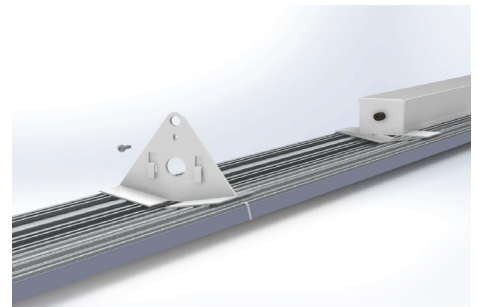
Align male and female ends of the quick connect triangles

Step 2:



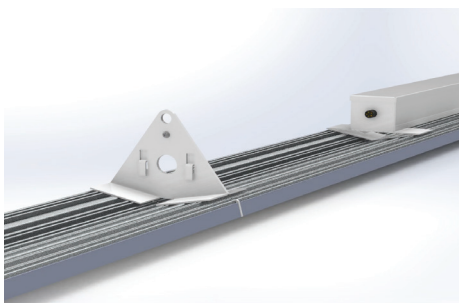
Slide together to fasten

Step 3:



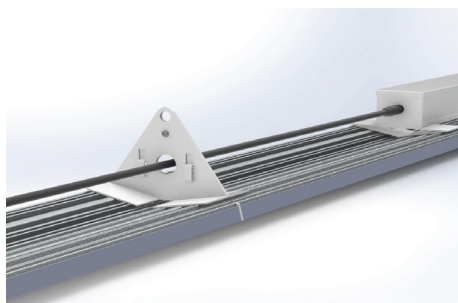
Fasten locking screw until tight

Step 4:



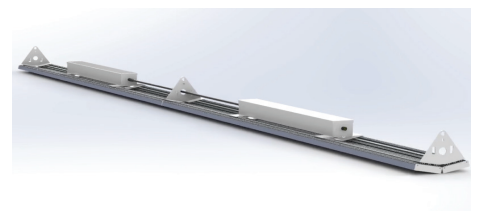
Mechanical connection complete

Step 5:



Use Q5DAISY4FT TCP Quick Connect cable to daisy chain units together

Complete:



NOTE:

Electrical Daisy Chain Capabilities using Q5DAISY4FT:

55W model = 15 units in series

110W model = 8 units in series

TCP®

325 Campus Dr. | Aurora, Ohio 44202 | P: 800-324-1496 | tcp.com



5 YEAR WARRANTY

Not all versions of this product are qualified on the DLC QPL. To view our DLC qualified products, please consult the DLC Qualified Products List at www.designlights.org/qpl.

90+ CRI to boost colors of shelf product



CRI >80



CRI >90

12 degree tilt results in a 144 degree beam angle

